



Bell Buckle Park

Bell Buckle, TN 37020 • www.bellbucklepark.info

Volume 1, Issue 1

May 2002

Published quarterly

PARK NEWS AND UPDATE

Inside this issue:

Here is a quick overview of what has been accomplished in the last few months.

- ◆ The Mayor and Aldermen have officially designated the old Bell Buckle School and surrounding 14 acres as the site for the Bell Buckle Park.
- ◆ A survey was sent out in February to the residents of Bell Buckle for their input on desired park facilities.
- ◆ In response to the survey (see page 2), the Park Board has developed a plan that incorporates the projects that were deemed most important to Bell Buckle citizens.
- ◆ The proposed plan includes development of the grounds and eventual renovation of the old school building.



Bell Buckle Park Board Meeting

- ◆ The town engineers of Highers, Koonce and Associates have produced drawings of the entire project along with the architect's renderings of the buildings. (See the drawings in the insert of this newsletter.)
- ◆ The Park Board is now in the process of phasing the various projects (see page 2).

Page Two

Survey Results
Website Info
Park Board
Name Your Park
Phase One

Page Three

Park Plans

Page Four

Park Plans

Page Five

July 4th Celebration
Clean Up Day
Name Your Park
Announcements

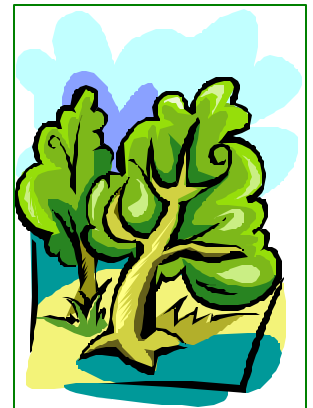
Page 6

Letter from Chairman

BELL BUCKLE IS 150 YEARS OLD

Did you know that Bell Buckle was established in **1852?**...and was incorporated in **1856?** That makes Bell Buckle 150 years old this year.

Other towns in our area held their 150th year's Sesquicentennial Celebration on the anniversary of the town's incorporation. Our big event is being planned for 2006. This will require the involvement of all the organizations and citizens of Bell Buckle.



Bell Buckle is a Tree City USA for the 2nd year.

SURVEY RESULTS – compiled from February Survey

Priority of outside activities - Activities are ranked in the order of most interest to least interest as tallied from the survey.

- 1 Walking/Jogging Trail**
- 2 Playground**
- 3 Outdoor Amphitheater/Stage**
- 4 Picnic Facilities
- 5 Arena for Horse Shows/Rodeos
- 6 Baseball/Softball Field
- 7 Batting Cages
- 8 Soccer Field
- 9 Horseshoe Pits
- 10 Basketball Court
- 11 Nature Trail
- 12 Swimming Pool

Priority of inside activities - Activities are ranked in the order of most interest to least interest as tallied from the survey.

- 1 Exercise Class**
- 2 Weight Room**
- 3 Community Theater**
- 4 Art/Photography Show
- 5 Art/Craft Classes
- 6 Private Party Rentals
- 7 Classrooms for Continuing Education
- 8 Meeting Rooms for Civic Associations
- 9 Drama Classes
- 10 Creative Writing Classes
- 11 Parent's Night-Out child Care
- 12 Book Club Meetings

Thanks to all who responded to the survey. We have used your responses as the major guide in planning the park design. Gladys Hatchett was winner of dinner for two at the Bell Buckle Café.

PARK WEBSITE

For the latest news and information:

www.bellbucklepark.info

Webbies Pro Shop has generously donated their expertise in developing a web site for the Bell Buckle Park. A big **Thank You** to Tianna Hyatt and her associates.

BELL BUCKLE PARK BOARD

Jenny Hunt, Chairman

Sharon Biggs Brian Biggs Katie Felices
Mark Felices Florence Hall Carla Webb
Kenny Parker, Associate Member

Meetings are 3rd Thursday of each month. Anyone interested is invited to attend.
6:00 p.m. at City Hall

NAME YOUR PARK

At the 4th of July Celebration,
there will be a box to submit your suggestions for the park name.
Be there! Be thinking! Be creative!

PHASE I - COMING SOON

The best projections show that the entire park complex will take around six years to complete. The Park Board is in the process of phasing the projects now.

PHASE I includes land and soil preparations, landscaping, a walking trail, a picnic pavilion with restrooms, a playground, parking and signage.

The engineers are now drawing up bid specs for these projects. We will begin fundraising and grant applications to fund these projects as soon as the information is solidified.

We hope to break ground on Phase I sometime in the spring/summer of 2003.

JULY FOURTH CELEBRATION

SCHEDULE OF EVENTS

11:00 - 1:00

Hamburger Cook-out

Hamburgers and condiments will be provided by the Park Board free of charge;

However,

everyone is asked to bring a covered side-dish.

11:00 - 1:00

Music and Entertainment

A special production highlighting the 150 years of Bell Buckle history starring local "celebrities" will be featured.

1:00

Political Forum

All candidates running for mayor and aldermen are invited to attend a political forum.

A moderator will keep the event running smoothly and forward.

2:00

Silent and Live Auction

There will be a live auctioneer and lots of great and useful items.



You are invited!
Community-wide
**4th of July
Celebration**
sponsored by
the Park Board at
the park site

Activities are planned for children of all ages.

CLEAN-UP DAY BIG SUCCESS!!

Thank You to all those who turned out for the Saturday clean-up. Drive by and check out the progress made. **Keep Watching!**



Tomm, Hannah , Brian, Justin & Sharon transform with paint.

ANNOUNCEMENTS

Auditions for the "150 Years of Bell Buckle" production will be held Thursday, May 9th at Town Hall from 6:00 - 8:00 p.m. All Bell Buckle residents are invited to try out. The talented Carla Webb will be directing and it is sure to be a not-to-be-missed event!

Do you wish to submit questions to the political candidates during the Fourth of July Political Forum? Drop your questions in the box at City Hall. Questions must be signed to be considered.

Needed for the 4th of July Auction!

Check your garage and storerooms for stuff to donate for the park auction. All proceeds will go to the Park Fund.

Call Katie Felices at 389-9223.

To contact a Park Board Member or for more information, you may log onto our web site, www.bellbucklepark.info and click on "Contact us". Someone will get back to you.

A Farmer's Market - Are you interested in organizing one during the summer months at the Park Site? Call Jenny Hunt at 389-6784.

Call Jenny Hunt at 389-6784

Welcome to the
Newsletter for the

Bell Buckle Park Board



Bell Buckle, Tennessee 37020
www.bellbucklepark.info

To contact a Park Board member or for more information, you may log onto our web site, www.bellbucklepark.info and click on "Contact Us"

LETTER FROM CHAIRMAN OF THE BELL BUCKLE PARK BOARD

A park for Bell Buckle! Just the idea of a park brings so much excitement, so much anticipation. Many times a park is thought of as just a place for children, but parks are truly a place for all ages and all interests.

We are focusing on these aspects of a park:

- A park must be visually pleasing; an urban forest that can benefit all who enter.
- A park should offer physical exercise options.
- A park should offer contemplative, reflective opportunities.
- A park should offer social benefits for interacting with others with common interests.
- A park should offer a place for play and a place to be carefree and relaxed.
- A park should offer civic opportunities and have activities for the betterment of the community.
- A park should provide a place for us to express and explore what is important and interests us.

After the 1/2-cent sales tax was implemented in 1996, several committees were formed to work toward establishing a park. They succeeded in taking the necessary steps to get us where we are today.

We have all seen the spirit that has lifted our country since the horror of September 11, 2001. The heart and soul of our country have shone through the disaster and turned us toward a united effort, a united vision and a united goal. The resounding theme is that we are all in this together.

Bell Buckle is unified by this event as well. The everyday ordinary activities that bind us together have gained greater meaning and created our own special spirit. Our park will reflect the spirit of our unique community. It is that spirit that the Park Board will call upon.

How are we going to do all this? It is a big undertaking. The surveys have already been gathered and the information compiled to give us direction.

- We are also working with the town engineer to plan the site so that it flows freely between environment and activities.
- We have been meeting with community members and members of Leadership Bedford to gather insight as well as to inform them of our plans.
- Many grants are being studied, and we are in close contact with the coordinator in middle Tennessee for state and federal grants.
- We are working to develop the vision for the entire park site, both land and building.
- The projects will then be phased according to community input and financial feasibility.
- After Phase I is designed, organizing and fundraising will begin in earnest.
- We will be calling for your help. To our delight, more than half of those returning surveys volunteered their services in some capacity or another to help build our park.

Scott Cocanougher, who was in the Leadership Bedford class that helped build Celebration Station in Shelbyville, told us, "Our goal was to build community spirit, and that spirit ended up building a park." We hope to see the spirit of Bell Buckle shine in the building of our park.

Jenny Hunt
Chairman, Bell Buckle Park Board